

Sweet St. Germain

Recommended by
Like Living ThereSM

This neat and charming one bedroom is set on a small street steps from the historic center of Left Bank life, Saint-Germain-des-Prés, where you can linger at Le Deux Magots or Café de Fiore. It's just a short walk to many other key attractions, such as the Luxembourg gardens, the Louvre, the Musée d'Orsay and Notre Dame. While in an active area, the courtyard aspect keeps things quiet.

If shopping is on your agenda there are dozens of great boutiques in the neighborhood and the Le Bon Marché grand magasin is only blocks away.

There's a choice of nearby metro stations to get you quickly to other parts of Paris.



Size: 50 square meters (538 square feet).
Comfort for 2 persons, can accommodate 3.

Floor: European first floor, walk up.

Bedrooms: One with double bed. A sofa bed in the living room will fit one.

Bathroom: Full, with shower.

Kitchen: Fully equipped with appliances and cooking and serving utensils. Bar counter.

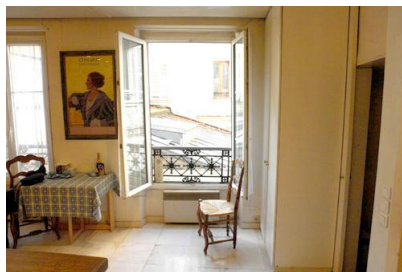
Living/dining: Large with sofa bed, dining table, windows to courtyard.



Communications: Small television, radio with CD player.

Other: Towels and linens furnished, clothes washer.

Rates: From euro 144 per night, 7-day minimum, cleaning included.



[Click for Google map](#)

[Check Availability](#)

Near the apartment:

Left: Gargoyle on Notre Dame.

Center: Sorbonne Metro station.

Right: Louvre pyramid.

