

# Montmartre comfort

Recommended by  
Like Living There<sup>SM</sup>

This apartment in the 18<sup>th</sup> arrondissement is near many Montmartre sights but on a quieter street. It has enough room to make a long stay comfortable, with three separate sleeping spaces. The furnishings are quite new. It is near Rue Lepic and the only remaining working windmill in Paris. The Basilica Sacré Couer is a short walk away. Near the Abesses and Lamarck/Caulincourt (Line 12) Metro stops, with direct service to the Madeleine and Concorde stations.



**Size:** 51 square meters (549 square feet).  
Comfort for 4 persons, can accommodate 5.

**Floor:** European first floor, walk up.

**Bedrooms:** Two each with a double bed. A sofa bed in the living room will fit one. A mattress can be added (additional charge).

**Bathroom:** Full, with shower, clothes washer, hair dryer. Separate water closet.



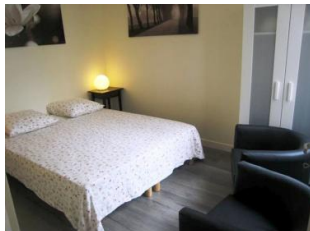
**Kitchen:** Fully equipped with appliances including dishwasher and cooking and serving utensils.

**Living/dining:** Sofa bed, dining table, coffee table. Exposed stone walls.

**Communications:** TV, stereo.

**Other:** Towels and linens furnished, iron and board.

**Rates:** From euro 170 per night for two depending on season and length of stay; 60 euro cleaning/supplies fee.



[Click for Google map](#)

[Check Availability](#)

## Around Paris:

Below left: Le Moulin de la Galette, the last working windmill in Montmartre.

Center: Basilica Sacré Couer, from Notre Dame.

Below right: Arc de Triomphe at night.

