

# Grand 3BR

Recommended by  
Like Living There<sup>SM</sup>

Family or friends can relax in the spacious apartment located a short walk from the bustling Opera and the grands magasins of Galeries Lafayette and Printemps. Comfortable bedrooms provide privacy while the large living/dining space makes sharing experiences easy. Shopping and dining abound and moderate walks take you to the area of the Palais Royal and Louvre. Montmartre is only a couple of metro stops in the other direction. Several metro stations are nearby and the Opera station offers multiple lines on which to visit other areas of the city.



**Size:** 120 square meters (1291 square feet). Comfort for 6 persons, can accommodate 8.

**Floor:** European fourth floor, with elevator.

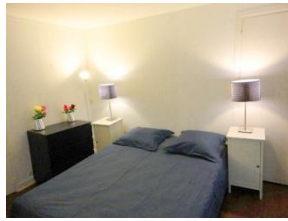
**Bedrooms:** Three, each with a double bed. A sofa bed in the living room will fit two.

**Bathroom:** Two with showers, separate w/c.

**Kitchen:** Fully equipped with appliances including dishwasher and cooking and serving utensils.

**Living/dining:** Sofa bed, chairs, large dining table.

**Communications:** Television, stereo system.



**Other:** Towels and linens furnished, clothes washer and dryer, iron and board.

**Rates:** From euro 240 to 400 per night, depending on season and length of stay; 60 euro cleaning/supplies fee.

[Click for Google map](#)

[Check Availability](#)

## Near the apartment:

Left: Avenue des Champs Elysées and Arc de Triomphe.  
Center: The Louvre pyramid.  
Right: Galeries Lafayette department store.

