

# Bastille family space

Recommended by  
Like Living There<sup>SM</sup>

Looking for a place that can handle the family or a group of friends? You've found it. Three bedrooms provide privacy and the attractive living and dining rooms are great for sharing experiences and plans. Nearby are local restaurants, shops, the Marche d'Aligre market. Place de la Bastille is a short walk away as is the scenic Canal Saint Martin.

To explore other areas of Paris, the Ledru Rollin Metro station (No. 8 line, Opera, Madeleine) is nearby and you can pick up the No. 1 line – direct to Notre Dame, the Louvre and other central sights, at the Bastille station.



**Size:** 95 square meters (1024 square feet). Comfort for 6 persons, can accommodate 7.

**Floor:** European fourth floor, with elevator.

**Bedrooms:** Three, two each with a double bed, one with two singles. A mattress can be added (euro 10 per day).

**Bathroom:** Full, with shower and tub, hair dryer. Separate water closet.

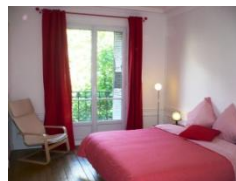
**Kitchen:** Fully equipped with appliances and cooking and serving utensils.

**Living/dining:** Sofa and love seat, dining table for six, coffee table.

**Communications:** Television with cable, CD player.

**Other:** Towels and linens furnished, iron.

**Rates:** From euro 160 per night, depending on season and length of stay; 60 euro cleaning/supplies fee.



[Click for Google map](#)

[Check Availability](#)

## Near the apartment:

Left: Place de la Bastille.

Below: Canal St. Martin.

Below right: View from Centre Pompidou.

