

# Sagrada Family Comfort

Recommended by  
Like Living There<sup>SM</sup>

This large, bright loft is a comfortable and affordable home base for a family or couples traveling together. Open plan with full kitchen, living room and large dining table. There are beds for six plus a sleeper sofa, and two bathrooms. Near Gaudi's spectacular and moving Sagrada Família and the Metro stop of the same name, it is minutes from Passeig de Gràcia and the Gothic Quarter. Owner's office is on-site.

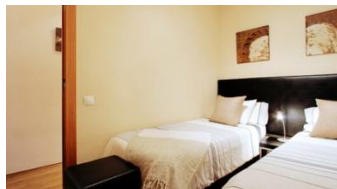
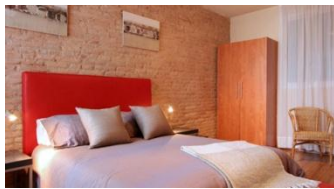


**Size:** Spacious 110 square meters (1184 square feet). For up to 8 people.

**Floor:** European first floor, with lift.

**Bedrooms:** One with large double bed. Two with twin beds. All have wardrobes.

**Bathrooms:** One en suite with the double bedroom, another to serve the other bedrooms. Both with showers.



**Kitchen:** Fully equipped with appliances and cooking and serving utensils.

**Living/dining:** Dining table for six, sleeper sofa. Large windows.



**Communications:** Color TV with satellite feed, high-speed wi-fi, radio, CD player.

**Other:** Towels and linens furnished. Clothes washer and dryer, iron, free cot for a child. Owner's office on-site.

**Rates:** From euro 140 per night for 2 persons, 20 euros each additional.

[Click for Google map](#)   [Check Availability](#)

## Near the apartment:

Left: Interior of Gaudi's Sagrada Família.

Center: Dining on Passeig de Gràcia, Eixample.

Right: Passeig de Sant Joan, Gràcia.

