

Gràcia penthouse

Recommended by
Like Living ThereSM

Enjoy a real Like Living There[®] experience in this newly renovated flat in the authentic Gràcia district. Relax on the private, spacious upper-level terrace outfitted with a dining table and lounge, or stop in at one of the many cafés, bars or restaurants within a few blocks of the building. The nearby, tree-lined Passeig de Sant Joan is a great place to stroll and is equipped with playgrounds for children. The Mercado de la Abaceria Central is within two blocks and the Sagrada Familia cathedral is only 15 minutes away on foot.

The Verdaguer Metro station has two lines that allow you to quickly and easily reach the rest of the city.



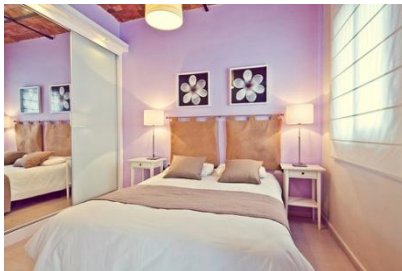
Size: 60 square meters (646 square feet), plus 20 square meter terrace. Can accommodate 1-3 persons.

Floor: European fourth floor, with elevator.

Bedrooms: One with double bed. A sofa bed in the living room will fit one.

Bathroom: Full, with hydromassage shower, toilet, hair dryer.

Kitchen: Fully equipped with appliances and cooking and serving utensils, small table and chairs.



Living/dining: Sofa bed, chairs, dining table, restored tile ceiling.

Communications: Television with cable, stereo, internet.

Other: Towels and linens furnished, iron and board, clothes washer.



Rates: From euro 130 per night for two, depending on season and length of stay; 50 euro cleaning fee.

[Click for Google map](#)

[Check Availability](#)

Near the apartment:

Left: Ceramic lizard, Gaudi's Parc Güell.

Center: Interior of Sagrada Familia.

Right: Passeig de Sant Joan.

